

Warranty

One year warranty from the date of purchase.

Problem as follows are not covered in warranty:

1. Damages due to wrong installation or operation.
2. Incorrect personal maintenance, change or modification of the machine.
3. Damages due to water, accident or natural disaster.
4. Superficial damages which do not interfere with the normal operation of the machine.

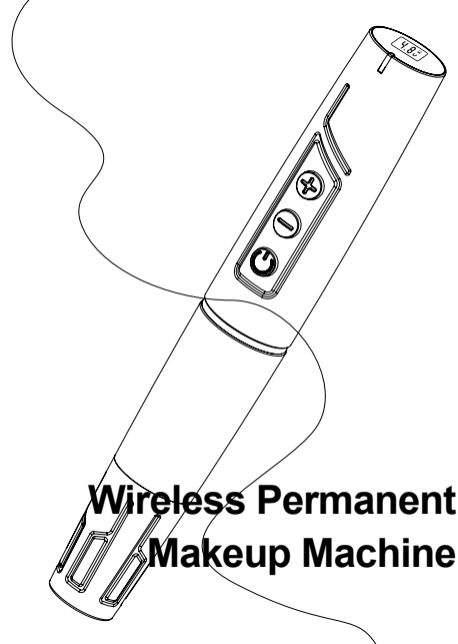
Attention

1. For long continuous use, it is recommended to rest the machine every 2 hours for 10 minutes.
2. Ensure that the needle is securely attached to the machine grip before turning on the machine.
3. Please do not touch the machine with wet hands.
4. Keep the machine away from children and pets.
5. Please store the portable battery in a dry and cool place.



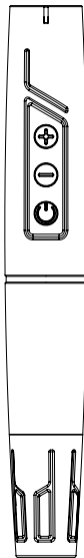
About after-sales:

**If you have
any questions
about the machine
please contact
the dealer
in time.**

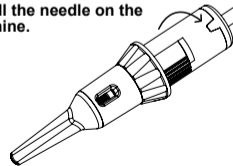


Wireless Permanent Makeup Machine

| | |
|----------------------------|---------------|
| Mode: | TP006 |
| Input: | 5V |
| Output: | 4-10V 800MA |
| Power: | 10w |
| Stroke: | 3mm |
| Material: | aluminum/matt |
| Battery: | 900MAh |
| Charging time: | 2-3 hours |
| USB: | 5V charger |
| Working time: | 4-5 hours |
| Pen+battery weight: | 91g |
| Battery weight: | 40g |
| Pen Size: | 22*144mm |
| Charging port: | Type-C |

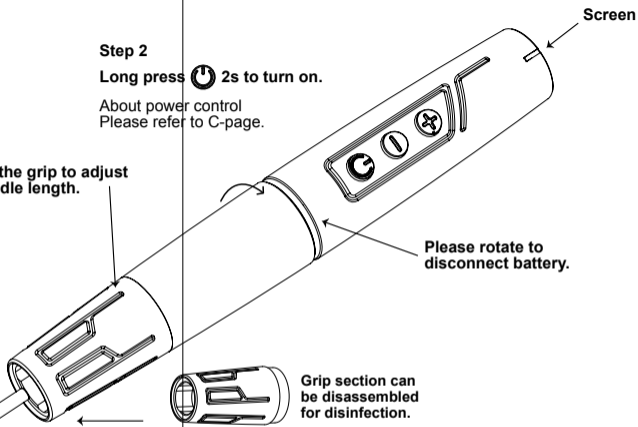


Step 1
Install the needle on the machine.



A-PAGE

Step 3
Rotate the grip to adjust the needle length.



Step 2
Long press 2s to turn on.

About power control
Please refer to C-page.

Cartridge Grip
Suitable for major cartridge brands

Please use needles cartridges with a hard membrane. If the machine is producing a loud noise, please switch to a different brand of needles.

B-PAGE

Power battery introduction

| Screen | Voltage | Battery Meter |
|--------|---------|---------------|
| | 4.8V | |

Switch: stop&start

Long press for 2 second, the default startup voltage is 7v.

Stop&start : click it once

Suspended state :

| | |
|--|--|
| | When the machine is paused, the voltage is displayed as 0.0 and returns to normal when restarted |
|--|--|

"+"up voltage

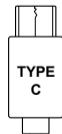
"-"down voltage

"+" "-", adjust Voltage by 0.1v

If the battery is low , please charge it in time
Charging voltage: DC5V+0.2
Charging time: 2-3 hours

After discharge test:
9V can support 1.6 hours of work
5V can support 3 hours of work

Charging port



C-PAGE

Battery protection

The battery has short-circuit protection. When the battery is short-circuited (instant power off). Please use the charger to power on the battery to reactivate the battery.

Cleaning surfaces

In the event of external contamination: Disassemble the grip and drive wipe the grip and drive especially the piston-and the long protective sleeve with a soft cloth moistened with a cleaning agent or a disinfectant. Clean inaccessible surfaces, e.g. the thread of the grip and drive unit with a soft-bristled nylon brush or cotton swab.

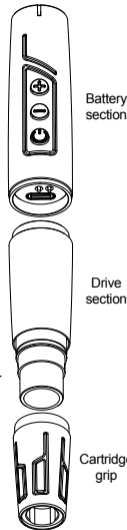
Note

The battery section and the drive section do not support high temperature and high humidity environment disinfection.

O-ring maintenance

When the cartridge are rotation, it is dry and not smooth. Apply a drop of lubricant on the O-ring.

If there is no professional lubricant, vegetable oil can be used instead. If the O-ring is broken, replace it in time.



Battery section

Drive section

Cartridge grip

D-PAGE